

WiseCrax®

Automatic, accurate, repeatable crack detection

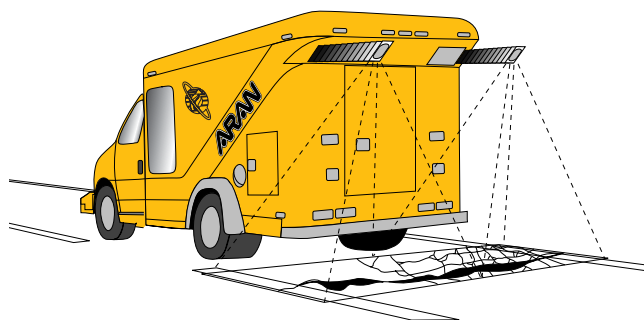
WiseCrax is a crack detection system developed by Roadware. Cracks as small as one millimeter are detected and analyzed automatically.

High speed cameras on retractable booms record sharp, clear images at variable highway speeds up to 80 km/h (50 mph). Video is recorded as a continuous series of non-overlapping, high contrast images 1.5 m by 4 m (4.9 ft by 13 ft).

Synchronized strobe lights eliminate shadows from trees, bridges, tunnels, and other overhead objects even in bright sunlight.

Images are processed off-line overnight at the office workstation by a unique open architecture process using advanced image recognition software.

Reports are produced describing crack type, severity, extent and location. Crack maps are easily produced and printed on a laser printer for hard copy output.



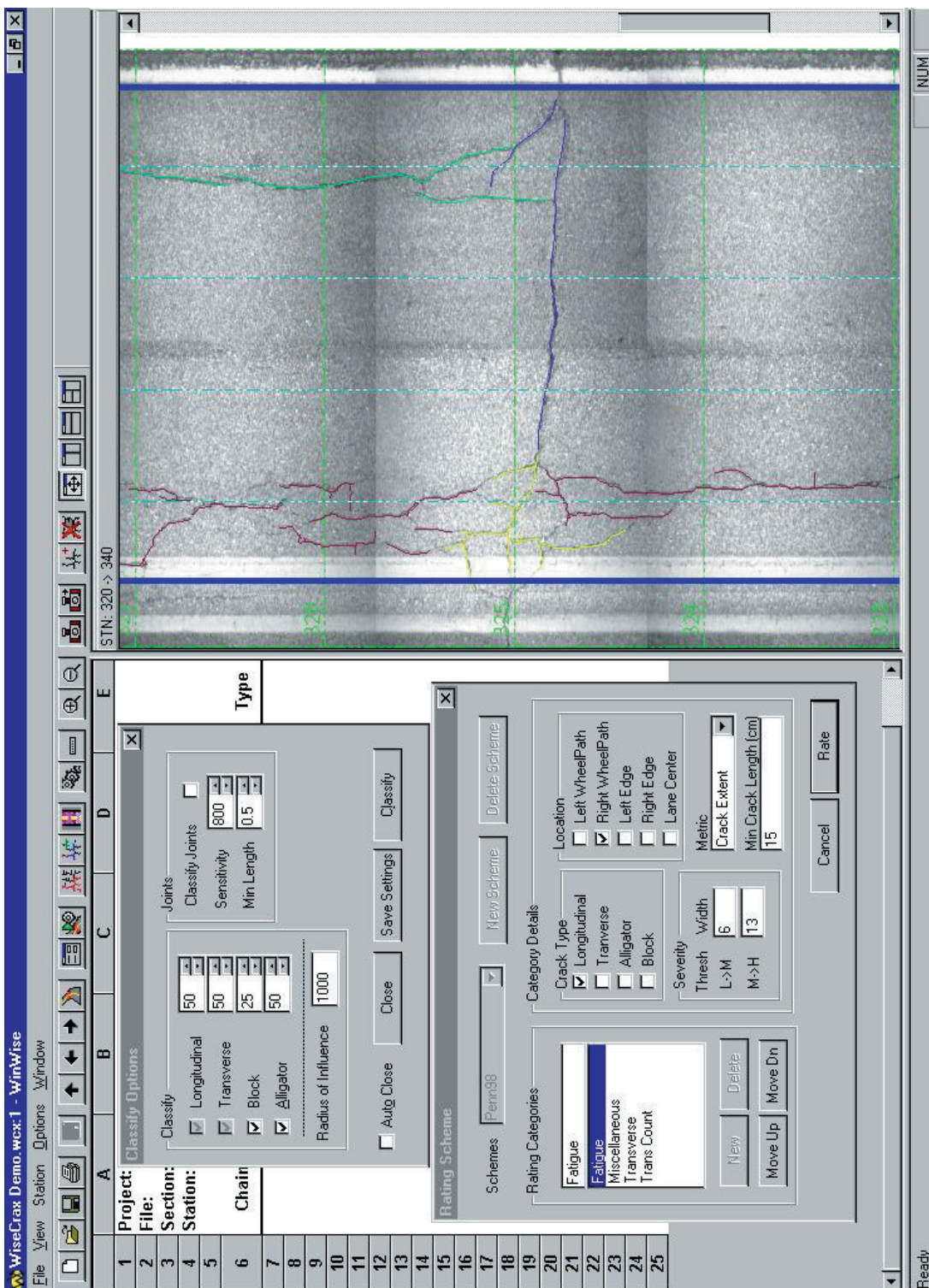
A unique symbiotic design enables the pavement engineer to interact with the computerized analysis process, to apply sound engineering judgment and experience to the automated outputs.

WiseCrax helps to remove the subjectivity and drudgery from pavement evaluation and ensures more accurate, repeatable comparisons of road deterioration from year to year.

The open-architecture software design makes it possible to adjust WiseCrax to suit local conditions and distress criteria.

Features

- ***Totally automated***
- ***Reports crack type, severity, extent and location***
- ***Detects and analyzes cracks as small as 1 mm (0.03 in.)***
- ***Prepares crack maps automatically***
- ***Dual video cameras record 1.5 m by 4 m sections of pavement***
- ***High intensity strobe lights produce consistent illumination of pavement images***
- ***Eliminates hazardous and expensive walking of pavements***
- ***Crack mapping can be done without disrupting traffic flow***
- ***Interactive, symbiotic and open architecture design***
- ***Helps agencies meet mandates for PMS data collection***
- ***Compliant with AASHTO and LTPP (SHRP) Protocols***



WiseCrax screen showing automatically detected cracks overlaid on pavement image